



Mel and Enid Zuckerman
College of Public Health

Vail Community Profile

Developed by the CPPW Evaluation Team

University of Arizona

Mel and Enid Zuckerman College of Public Health

for the

Communities Putting Prevention to Work Program

Pima County Health Department

Made possible by funding from the Pima County Health Department via the U.S. Department of Health and Human Services.

VAIL

Population: 6,185

Location: Outside of metro Tucson, about 14 miles to the southeast

Focus Area Boundaries:

Vail CDP

North: Colossal Cave Rd.
South: Sahuarita Rd.
West: Wentworth Rd.
East: Sonoita Mountain View Hwy.
(South of I-10)

Corona de Tucson CDP

North: Sahuarita Rd.
South: Cam Aurelia
West: Harrison Rd.
East: Houghton Rd. (Cam Aurelia to Vista Monte Dr.) and Melpomene Way (Vista Monte Dr. to Sahuarita Rd.)

Land area: Approximately 21 mi²

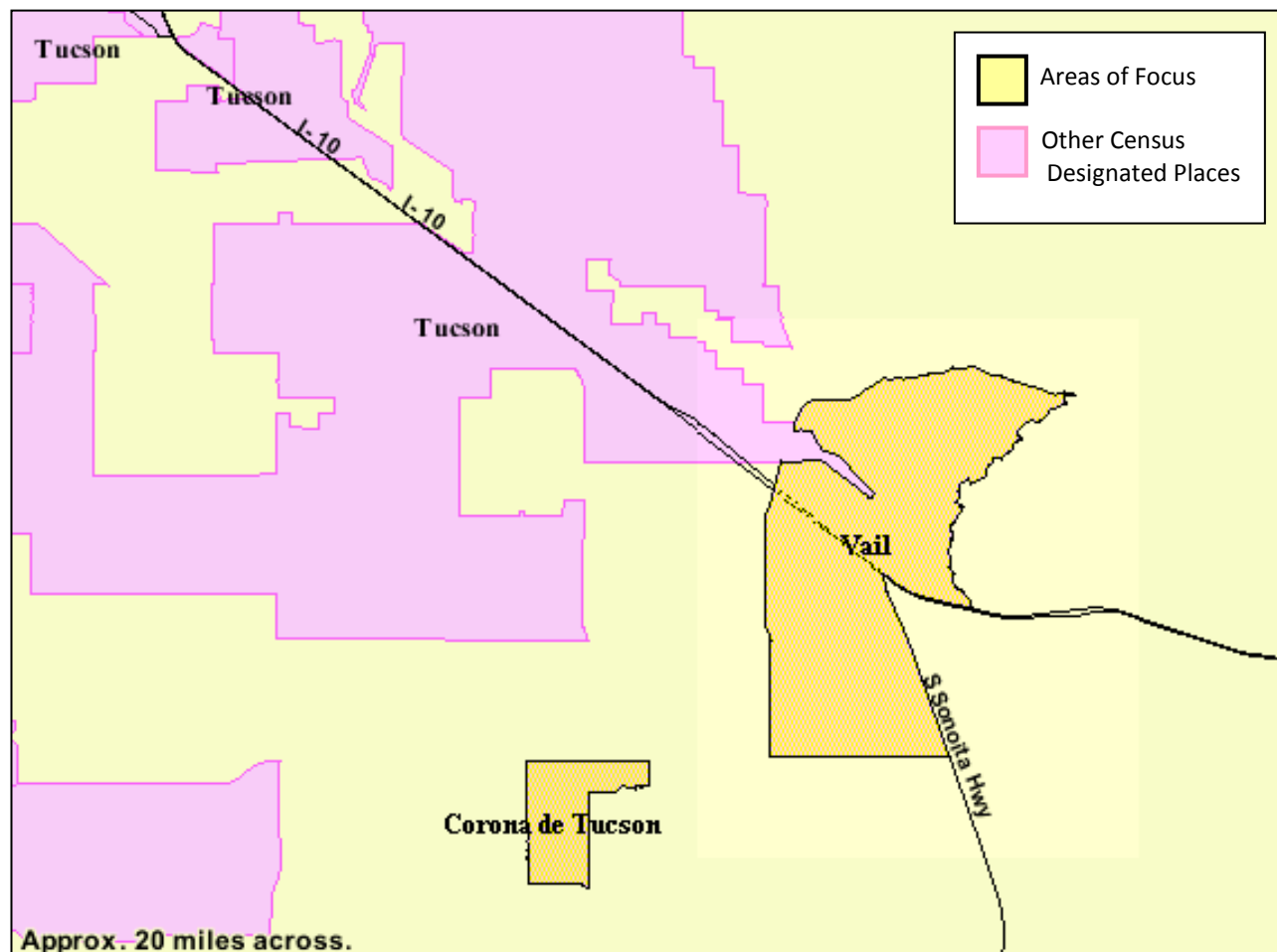
Colonia: No

Congressional District: 8

Board of Supervisors District: 4

Census Tracts:

Vail CDP & Corona de Tucson CDP



Data Sources: This community profile contains information from multiple sources.



The magnifying glass symbol indicates that the information came from public sources like the U.S. Census Bureau or agency websites.



The camera symbol indicates that the information originated from an observational assessment of the community conducted by evaluators from the University Of Arizona College Of Public Health.



The microphone symbol indicates that the information came from an interview with the CPPW neighborhood Connector conducted by evaluators from the University of Arizona College of Public Health.



The clipboard symbol indicates the data originated from the community assessments administered to neighborhood residents by the CPPW neighborhood Connector.

SOURCES: Govtrack.us. Arizona's 7th Congressional District & Map. Available at: <http://www.govtrack.us/congress/findyourreps.xpd?state=AZ&district=7>.
Pima County Board of Supervisors. District Map. Available at: <http://www.pima.gov/bos/distmap/images/bos17.pdf>.
U.S. Census Bureau. 2005-2009 American Community Survey 5-Year Estimates. Available at: <http://factfinder.census.gov>.
U.S. Department of Housing & Urban Development. Designated Colonias in Arizona. Available at: <http://www.hud.gov/local/az/groups/coloniasaz.cfm>.

POPULATION CHARACTERISTICS

The population of Vail differs from the population of Pima County and the overall U.S. population (see table at right). Compared to these two groups, people in Vail:

- *Are slightly younger* – The proportion of Vail inhabitants age 65 years or older is less than county and national figures.
- *Are more white* - The population of Vail is 77% non-Hispanic white, compared to 57% of those in Pima County and 66% of those in the U.S.
- *Are less Hispanic than in other parts of Pima County* – 17% of those in Vail are Hispanic or Latino of any race, compared to 33% of those countywide.
- *Are less likely to be foreign born* – 6% of those in Vail are foreign born, compared to 13% of those in Pima County and 12% of those nationally.
- *Are less likely to speak languages other than English* – 11% of those in Vail speak a language other than English at home, compared to more than one quarter of people in Pima County and about 20% of the U.S. population.

Employment by Industry

Of the Vail population age 16 years and over, nearly three-quarters (72%) is in the labor force, compared to nearly two-thirds (65%) in the U.S.

- *Educational, health and social services* are the top sources of civilian labor in both Vail (26% of labor) and Pima County (24%).
- *Public administration* (10%) accounts for a higher proportion of labor in Vail than in Pima County (6%), while *construction* (3%) accounts for less (9% in Pima County).

Demographics (ACS 2005-2009)

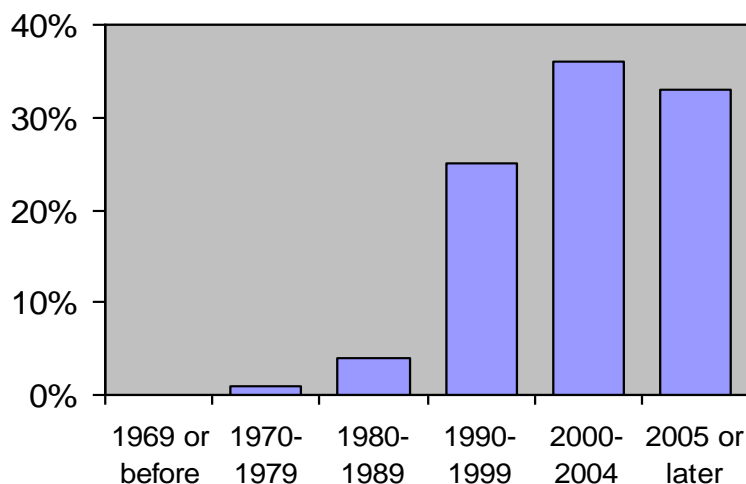
| | VAIL | PIMA COUNTY | U.S. |
|---|-------------|-------------|-------------|
| GENDER | | | |
| Male | 51.9% | 49.0% | 49.3% |
| Female | 48.1% | 51.0% | 50.7% |
| AGE | | | |
| Median age | - | 36.8 years | 36.5 years |
| Under 5 years | 5.7% | 6.9% | 6.9% |
| 18 years and over | 71.9% | 76.3% | 75.4% |
| 65 years and over | 8.1% | 14.7% | 12.6% |
| HOUSEHOLDS AND FAMILIES | | | |
| Average household size | 2.98 people | 2.62 people | 2.60 people |
| Average family size | 3.34 people | 3.30 people | 3.19 people |
| Median household income | - | \$45,885 | \$51,425 |
| Median family income | - | \$56,711 | \$62,363 |
| Per capita income | \$28,618 | \$24,556 | \$27,041 |
| RACE AND ETHNICITY | | | |
| Not Hispanic or Latino: | | | |
| White alone | 76.8% | 57.2% | 65.8% |
| Black or African American alone | 2.1% | 3.1% | 12.1% |
| American Indian and Alaska Native alone | 1.1% | 2.5% | 0.7% |
| Asian alone | 1.3% | 2.4% | 4.3% |
| Native Hawaiian and Other Pacific Islander alone | 0.0% | 0.1% | 0.1% |
| Some other race alone | 0.0% | 0.3% | 0.2% |
| Two or more races | 2.1% | 1.6% | 1.6% |
| Hispanic or Latino (of any race) | 16.7% | 32.8% | 15.1% |
| NATIVITY / LANGUAGE | | | |
| Foreign born | 6.0% | 13.2% | 12.4% |
| Speak a language other than English at home (population 5 years and over) | 11.0% | 28.0% | 19.6% |

NEIGHBORHOOD CHARACTERISTICS

Residential Areas

- Vail has 2,175 housing units
- About 5% of housing units in Vail are vacant, compared to 12% across Pima County
- Vail is mostly comprised of homeowners: About 92% of housing units in Vail are owner-occupied and 8% are renter-occupied

**Occupied Housing Units by Year
Householder Moved Into Unit**



0.0% of housing units lack complete plumbing facilities

0.6% lack complete kitchen facilities

1.1% have no telephone services

NEIGHBORHOOD ASSETS

What do respondents like **MOST** about their neighborhood? (N = 95)

| | |
|---------------------------------------|-----|
| It's quiet | 28% |
| The people | 26% |
| The scenery (beauty, mountains, etc). | 11% |

Who answered the survey?

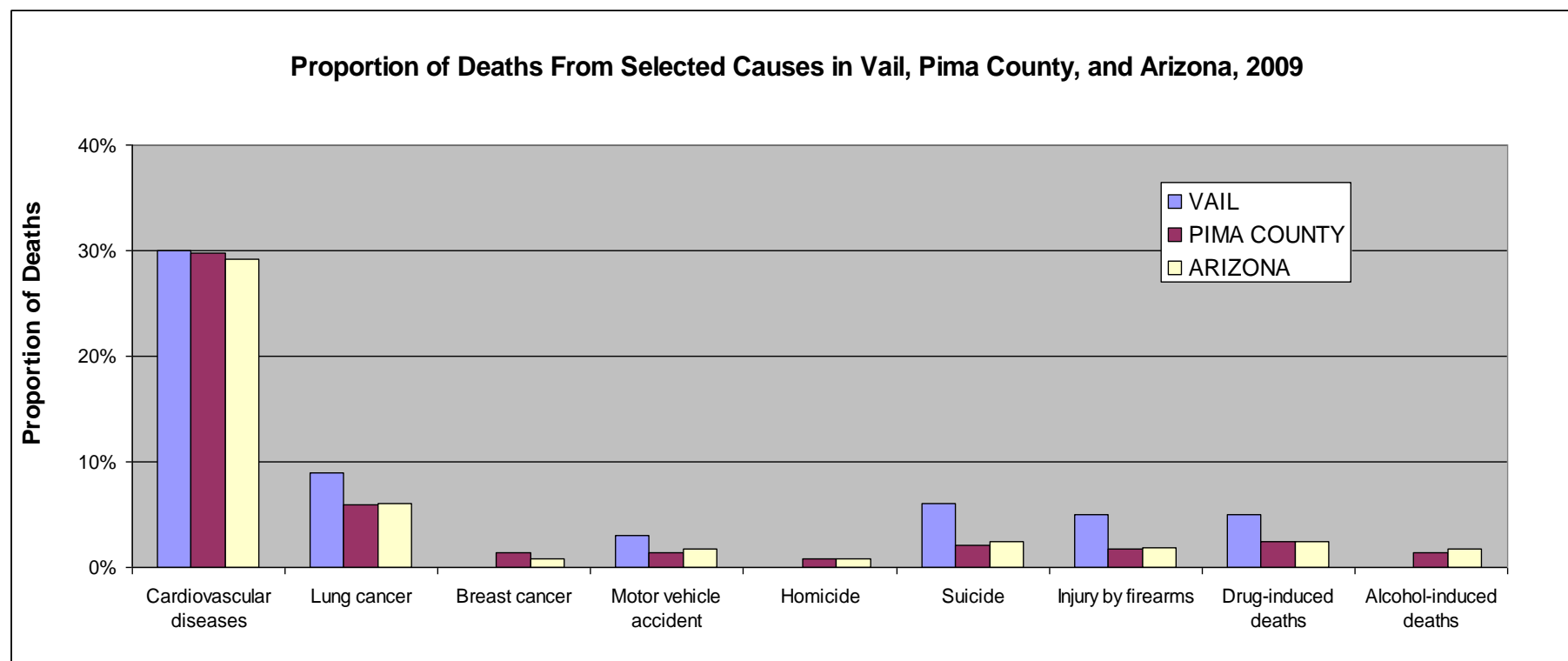
- ❖ 95 members of the Vail/Corona community
 - 57 surveys were conducted at various community events in Corona and Old Vail.
 - 38 surveys were conducted at the Vail Pride Day at the Fairgrounds in February 2011.
- ❖ 100% conducted in English

SOURCE: U.S. Census Bureau. 2005-2009 American Community Survey 5-Year Estimates. Available at: <http://factfinder.census.gov>.

HEALTH INDICATORS

Causes of death differed between Vail, Pima County, and the state of Arizona in 2009 (see chart below):

- Cardiovascular diseases were the leading cause of death in Vail, Pima County, and Arizona.
- There were greater proportions of deaths from lung cancer, suicide, injury by firearms, and drugs in Vail than in Pima County or Arizona.
- There were no deaths from breast cancer, homicide, or alcohol.



SOURCE: Arizona Department of Health Services. Number of deaths from selected causes by selected community, Arizona, 2009. Available at: <http://www.azdhs.gov/plan/report/ahs/ahs2009/pdf/9c.pdf>.

COMMUNITY ORGANIZATIONS

Cienega Rotary Club

Meets monthly at Del Lago Golf Club (14155 E. Via Rancho Del Lago)

Local service organization. Projects include the Dictionary Project, through which the club provides Vail students with dictionaries in order to assist them in completing the school year as good writers, active readers and creative thinkers.

Vail Community Action Board

Community organization that advocates for and assists in affecting positive change in the Vail community, enriches relationships among children, families, businesses, government and the school district, and provides a safe and healthy environment for all residents. Projects have included:

- Vail Vision Project – Leaders met to develop motto and set of value statements.
- Vail Community Center – Meetings and discussion have been held to plan the development of a new community center for community gatherings and events.
- 4-Acre Park – Group has overseen proposal of an area park.

Vail Education Foundation

Community organization which seeks to expand the possibilities of both curricular and extracurricular education in the Vail School District (VSD) through strategic funding of projects and strengthening community relationships. The group provides funding to support projects that enrich the educational process of students in the VSD. Past projects have included a percussion program at Senita Valley Elementary and Beyond Textbooks, an initiative that supplies digital resources for teachers.

Vail Preservation Society

Creating community connections to the cultural resources within the Cienega Corridor. Building a strong future through the foundation of our shared past through preservation.

Greater Vail Area Chamber of Commerce

To advance the general welfare and prosperity of the Vail, AZ area so that its citizens and all areas of its business community shall prosper. We shall provide particular attention and emphasis to the economic, civic, commercial, industrial and educational interests of the area.

SOURCES: Cienega Rotary Club. Available at: <http://www.clubrunner.ca/CPrg/home/homeF.asp?cid=3342>.
 Greater Vail Area Chamber of Commerce. Available at: <http://gvacc.memberlodge.com/>.
 Vail Community Action Board. Available at: <http://vailcab.org/>.
 Vail Education Foundation. Available at: <http://www.vaileducationfoundation.org/>.
 Vail Preservation Society. Available at: <http://www.vailpreservationsociety.com/>.

FAITH-BASED ORGANIZATIONS

Within focus areas:

Church of Jesus Christ of Later Day Saints

2900 E Calle Bacardi
Vail, AZ

Corona De Tucson Baptist Church

3081 East Shasta Lane
Vail, AZ

Santa Rita Community Church

16701 S Houghton Road
Vail, AZ

St. Rita in the Desert

13260 E Colossal Cave
Vail, AZ

Vail Valley Baptist Church

13801 E. Benson Hwy., Suite C
Vail, AZ

Outside of focus areas:

Grace Fellowship:

Meetings held in Old Vail Middle School
13299 East Colossal Cave Road
Vail, AZ

Rincon Community Church

Meetings at Senita Valley Elementary
10750 E. Bilby Rd
Vail, AZ

Vail Christian Church

Services at Empire High School/Office
8000 S Kolb Rd #190
Tucson, AZ

PUBLIC TRANSPORTATION

SunTran (Tucson's regional bus service)

Service

There is no bus transportation connecting Vail to Tucson resources. One Express route extends from Tucson out towards Vail but stops short of the target area (see map below).

Partial SunTran Map of Vail Area



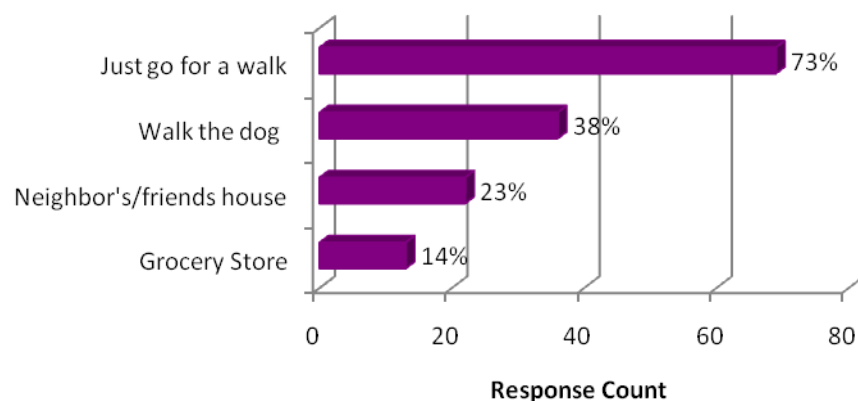
Park & Ride Bus Stop in Vail

ACTIVE TRANSPORTATION



There are no sidewalks through town and no bike lanes. The city and the county need to do a better job with planning when they allow development to happen. They don't take into consideration sidewalks, playgrounds, and they don't consider children growing up in these areas.

**Most Common Bike/ Walk Destinations
(N = 95)**

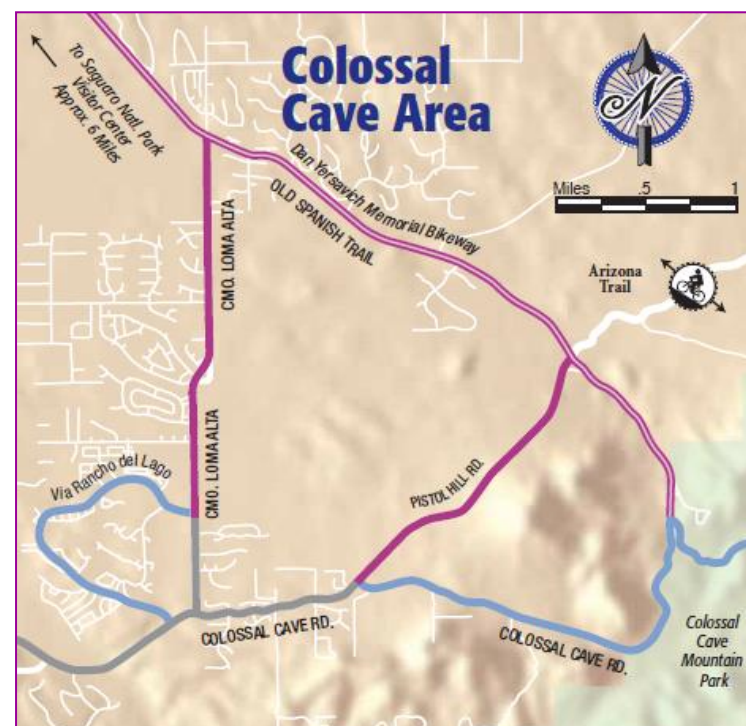


Eight-two percent (82%) of respondents walk or bike in the Vail/ Corona de Tucson area.

Bikeability

Bike Routes

The Dan Yersavich Memorial Bikeway connects Vail to eastern Tucson. Additionally, there are several bike routes and bikeable residential streets on the area's northern border (see map below).



SOURCES: Carondelet Health Network. St. Joseph's Hospital. Available at: <http://www.carondelet.org/home/hospitals-locations/st-josephs-hospital.aspx>.
LocalHarvest. Map-based search engine. Available at: <http://www.localharvest.org/>.

HEALTH SERVICES

Closest hospital (located approximately 16 miles northwest of Vail):

St. Joseph's Hospital
350 N. Wilmot Rd.

Services: Emergency services, heart & vascular services, neurology/neurosurgery, women's care, behavioral health services, imaging services, rehabilitation services, orthopedic surgery, outpatient surgery, and more.

Health care providers near Vail:

Carondelet Medical Mall at Rita Ranch

- Primary care, imaging services, OB/GYN, cardiology, physical therapy

Aeris Dental

Aleit Healthcare

Andrew Weil MD

Crossroads Therapy Clinic

Momentum Physical Therapy

Ohio Valley Dental Care

Saguaro Physician Group

Southeast Clinic

Vail Family Dentistry



FOOD SYSTEMS RESOURCES

Farmers' Markets

NONE WITHIN TARGET AREA

Closest farmers' market (about 7 miles from the Vail community):

Rincon Valley Farmers & Artisans Market

12500 E. Old Spanish Trail

Saturdays

9am - 2pm (Winter); 8am – 1pm (Summer)

Accepts AZ FMNP vouchers

Gardening

CURRENTLY NO COMMUNITY GARDENS IN THE TARGET AREA



I think that those of us who have started getting gardens going have made a difference in my neighborhood. We share food. We are in an agricultural residential area.

SOURCES: Carondelet Health Network. St. Joseph's Hospital. Available at: <http://www.carondelet.org/home/hospitals-locations/st-josephs-hospital.aspx>. LocalHarvest. Map-based search engine. Available at: <http://www.localharvest.org/>.

SCHOOLS & CHILD CARE

Schools

Children and youth who reside in Vail attend schools in Vail School District (VSD). Of 16 VSD schools, none are located within Vail CDP. VSD schools include:

1. *Ocotillo Ridge Elementary School
2. *Old Vail Middle School
3. *Acacia Elementary School
4. *Cienega High School
5. *Pantano High School
6. *Corona Foothills Middle School
7. *Sycamore Elementary School
8. Empire High School
9. Vail Academy and High School
10. Cottonwood Elementary School
11. Desert Willow Elementary School
12. Desert Sky Middle School
13. Mesquite Elementary School
14. Rincon Vista Middle School
15. Senita Valley Elementary School
16. Civano Community School

*Schools near areas of Vail where CPPW efforts are concentrated

Child Care

Little Lamb Pre-school and Daycare

13540 Garigans Gulch Capacity: 70

YMCA at Corona/Sycamore School

16701 S. Houghton Capacity: 97

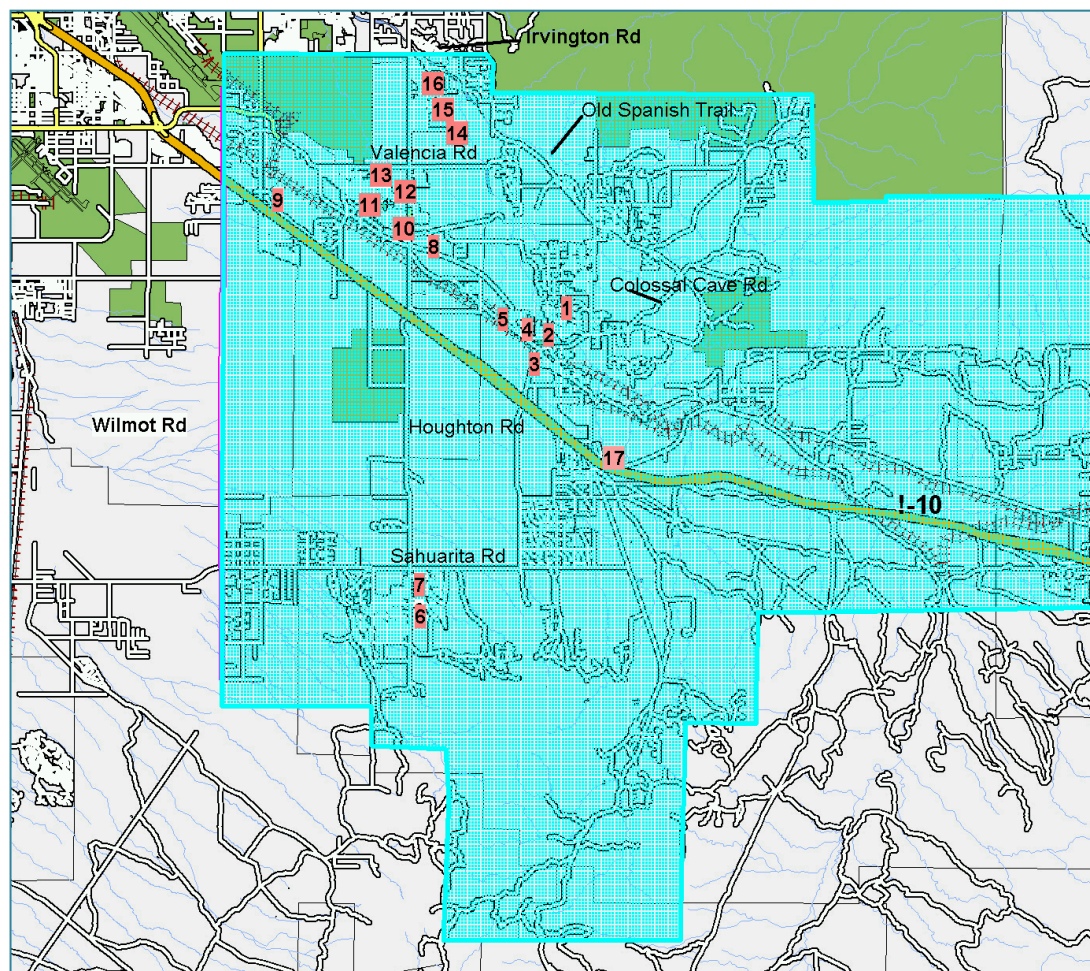
YMCA at Ocotillo Ridge

10170 S. White Lightning Lane Capacity: 105

YMCA of Metropolitan Tucson

Old Vail Middle School
13299 E. Colossal Cave Rd. Capacity: 465

Map of Vail School District



NEIGHBORHOOD CONCERNS



We feel rural. We don't have sidewalks and low lighting. People out walking have to contend with coyotes, javelinas, rattlesnakes. We don't have any grocery store nearby.

Main barriers preventing families from outdoor exercise (N = 95):

- ★ **Lack of playground and park facilities (33%)**
- ★ Lack of access to school grounds after school hours **(25%)**
- ★ Lack of a safe place to walk / run **(23%)**

Other reasons: no paved bike trails; no available sidewalks; no access to public facilities.

Forty-two respondents **(44%)** state they are not aware of accessible recreational facilities.

Forty respondents **(42%)** said they are aware of recreational facilities, of which **73%** would like to utilize the available neighborhood and local school facilities.

COMMUNITY STRESS INDICATORS



Poverty

In Vail, proportions of individuals and families living below the poverty level are less than corresponding figures for Pima County and the U.S.

| Percent whose income in the past 12 months is below poverty level | | | |
|---|-------|-------------|-------|
| | Vail | Pima County | U.S. |
| All people | 5.8% | 15.7% | 13.5% |
| 18 years and over | 4.9% | 13.8% | 11.8% |
| 65 years and over | 1.2% | 8.4% | 9.8% |
| Families | 3.4% | 10.7% | 9.9% |
| With related children under 18 years | 5.2% | 17.6% | 15.3% |
| With related children under 5 years | 0.0% | 19.4% | 16.6% |
| Families with female householder, no husband present | 14.1% | 27.5% | 28.7% |
| With related children under 18 years | 14.1% | 35.5% | 37.1% |
| With related children under 5 years | 0.0% | 45.1% | 45.6% |

OPPORTUNITIES



"If your neighborhood were to create opportunities for its residents to be healthy, how would you go about doing it?"

1. Increased Infrastructure

- New parks and playgrounds
- Sidewalks or walking paths with lighting
- Community Center in the more isolated areas

2. City and County Planning to support growth

- Encourage economic growth
- Create opportunities for children to be physically active
- Bring in restaurants with healthy food options

3. Gardens

- Getting more people involved in starting their own gardens
- Having a community garden as a way to bring people together

4. Collaborating with other community organizations and the school district



Open land in Vail/ Corona de Tucson area

*I think once people understand all of what we are trying to do, people will be interested in it.
The people I have talked to are excited about it.*